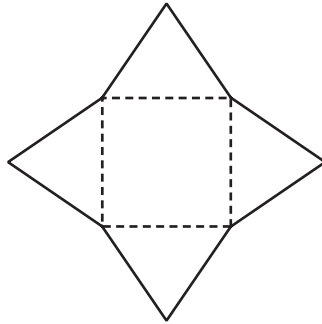




1



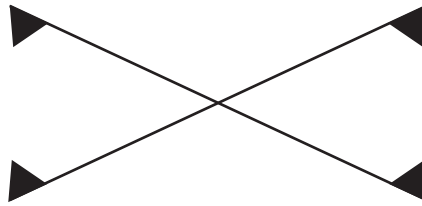
Write down the name of the solid that can be made from the net shown in the diagram.

Answer ..... [1]

2 Write down all the square numbers which are factors of 100.

Answer ..... [2]

3



For the diagram, write down

(a) the number of lines of symmetry,

Answer(a) ..... [1]

(b) the order of rotational symmetry.

Answer(b) ..... [1]

4 In a desert the temperature at noon was  $38^{\circ}\text{C}$ .  
At midnight the temperature was  $-3^{\circ}\text{C}$ .

(a) Find the change in temperature between noon and midnight.

Answer(a) .....  $^{\circ}\text{C}$  [1]

(b) At 02 00 the temperature was  $4^{\circ}\text{C}$  below the midnight temperature.

Write down the temperature at 02 00.

Answer(b) .....  $^{\circ}\text{C}$  [1]

- 5 Multiply out the brackets.

$$x(2x + y)$$

Answer ..... [2]

---

- 6 Solve the equation.

$$\frac{2x + 1}{3} = 4$$

Answer  $x =$  ..... [2]

---

- 7 Work out  $\sqrt[3]{7.2^3 - 100}$ .  
Give your answer correct to 3 decimal places.

Answer ..... [2]

---

- 8 Chris and Max share \$45 in the ratio Chris:Max = 7 : 2 .

Calculate how much Chris receives.

Answer \$ ..... [2]

---

- 9 When Valentina was 10 years old, her mass was 32 kg.  
Two years later her mass had increased by 45%.

Calculate Valentina's mass when she was 12 years old.

Answer ..... kg [2]

---

For  
Examiner's  
Use

- 10 Change 18.75% into a fraction.

Write your answer in its lowest terms.

Answer ..... [2]

- 11 Factorise completely.

$$3ac - 6ad$$

Answer ..... [2]

- 12 Simplify  $\left(1\frac{1}{2}\right)^{-3}$ .

Give your answer as a fraction.

Answer ..... [2]

- 13 Solve the simultaneous equations.

$$3x + y = 5$$

$$5x + y = 9$$

Answer  $x =$  .....  
 $y =$  ..... [2]

- 14

17

27

$\sqrt{17}$

0.294

$\frac{5}{17}$

From the list of numbers, write down

- (a) a prime number,

Answer(a) ..... [1]

- (b) an irrational number,

Answer(b) ..... [1]

- (c) the smallest number.

Answer(c) ..... [1]

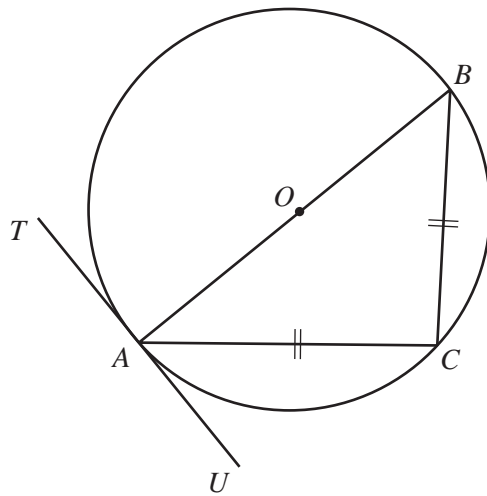
15 Amiria invests \$200 for 2 years at 3% per year **compound** interest.

Calculate the total amount Amiria has at the end of the two years.

For  
Examiner's  
Use

Answer \$ ..... [3]

16



NOT TO  
SCALE

In the diagram,  $TAU$  is a tangent to the circle at  $A$ .  
 $AB$  is a diameter of the circle and  $AC = BC$ .

Find

(a) angle  $BCA$ ,

Answer(a) Angle  $BCA = \dots\dots\dots$  [1]

(b) angle  $ABC$ ,

Answer(b) Angle  $ABC = \dots\dots\dots$  [1]

(c) angle  $CAU$ .

Answer(c) Angle  $CAU = \dots\dots\dots$  [1]

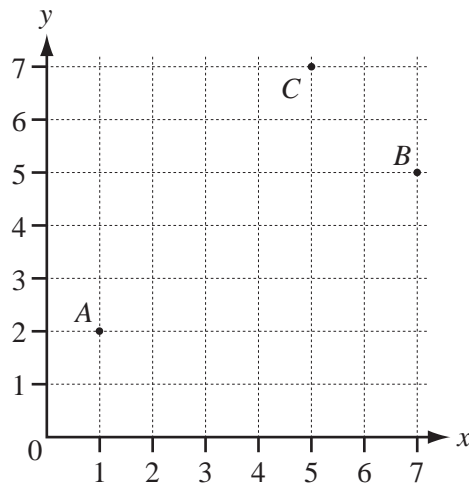
17 Insert brackets to make each statement correct.

(a)  $7 + 2 \times 9 = 81$  [1]

(b)  $36 \div 6 \div 2 = 12$  [1]

(c)  $5 \times 3 + 6 \times 2 = 90$  [1]

18



The diagram shows three points,  $A(1, 2)$ ,  $B(7, 5)$  and  $C(5, 7)$ .

(a) Write as column vectors

(i)  $\vec{AC}$ ,

Answer(a)(i)  $\vec{AC} = \begin{pmatrix} \phantom{0} \\ \phantom{0} \end{pmatrix}$  [1]

(ii)  $\vec{CB}$ .

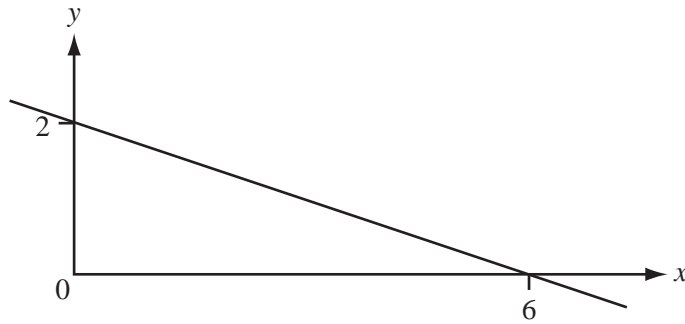
Answer(a)(ii)  $\vec{CB} = \begin{pmatrix} \phantom{0} \\ \phantom{0} \end{pmatrix}$  [1]

(b) Use two of the symbols  $+$ ,  $-$ ,  $=$  in the spaces to make a correct statement.

$\vec{AC}$  .....  $\vec{CB}$  .....  $\vec{AB}$  [1]

For  
Examiner's  
Use

19



The diagram shows a straight line passing through the points (0, 2) and (6, 0).

Find the equation of this line in the form  $y = mx + c$ .

Answer  $y =$  ..... [3]

20



(a) The diagram shows 5 discs.  
One disc is chosen at random.

(i) Which number is most likely to be chosen?

Answer(a)(i) ..... [1]

(ii) What is the probability that the number on the disc is even?

Answer(a)(ii) ..... [1]

(iii) What is the probability that the number on the disc is even and a factor of 20?

Answer(a)(iii) ..... [1]

(b) A disc is chosen at random from the discs with even numbers.

What is the probability that the number on the disc is a factor of 20?

Answer(b) ..... [1]

Questions 21 and 22 are printed on the next page

21

0 0 0 1 2 2 4 4 5 9

The list shows the number of days absent in a school term for each of 10 students.

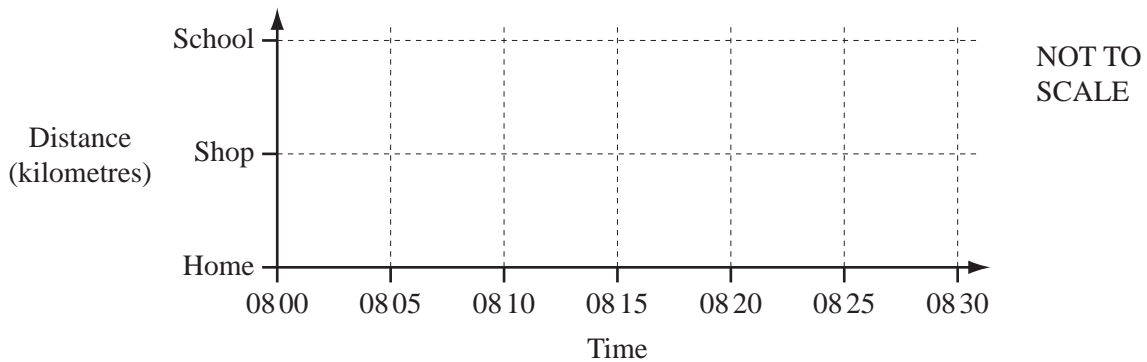
Find the mode, the median and the mean for the number of days absent.

Answer Mode = .....

Median = .....

Mean = ..... [4]

22



Rob walks to school each morning.  
 One day, he leaves home at 08 00.  
 He stops at a shop at 08 10 and stays there for 5 minutes.  
 He then continues to school and arrives at 08 30.

(a) Draw the travel graph for Rob's journey from home to school. [3]

(b) Rob's average speed for the whole journey from home to school is 3.3 km/h.

Calculate the distance from Rob's home to school.

Answer(b) ..... km [2]

Permission to reproduce items where third-party owned material protected by copyright is included has been sought and cleared where possible. Every reasonable effort has been made by the publisher (UCLES) to trace copyright holders, but if any items requiring clearance have unwittingly been included, the publisher will be pleased to make amends at the earliest possible opportunity.

University of Cambridge International Examinations is part of the Cambridge Assessment Group. Cambridge Assessment is the brand name of University of Cambridge Local Examinations Syndicate (UCLES), which is itself a department of the University of Cambridge.